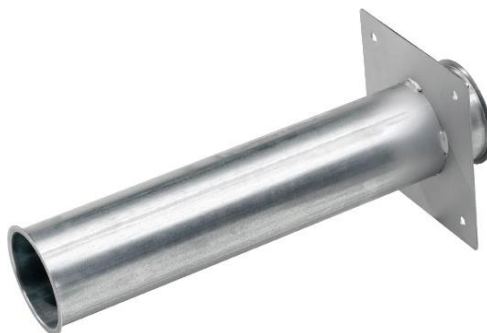


## 8 Beading tube including flange plate, straight and bent

### 8.1 Straight with flange plate

*Beading tube galvanized steel DN100, both sides upturned edges with including flange plate 200 x 200 x 2 mm*



Item No.	Type	Dimension [mm]	Tube length [mm]	Wall thickness (mm)	kg/pcs.
14545	BRG-F-100-500-1-2-V	100	500	1	1,6

### 8.2 Straight

*Beading tube galvanized steel DN100, both sides upturned edges*



Item No.	Type	Dimension [mm]	Tube length [mm]	Wall thickness	kg/pcs.
14540	BRG-100-50-1-2-V	100	50	1	0,13
14541	BRG-100-200-1-2-V	100	200	1	0,55
14542	BRG-100-500-1-2-V	100	500	1	1,37
14543	BRG-100-1000-1-2-V	100	1000	1	2,7
14544	BRG-100-2000-0,75-2-V	100	2000	0,75	5,4